

Dudley Pike & Turkeyfoot Road Intersection

A dual left turn will be added from westbound Dudley Pike to Turkeyfoot Road southbound to help reduce the back-ups on Dudley. The sidewalk along the north side of Dudley Pike will be extended from the intersection to the entrance of the golf course.

There are two bike/pedestrian options in this area:

- A 10' wide shared-use path on both sides of Turkeyfoot Road, or
- A conventional sidewalk with on-street bike lanes (similar to the current configuration south of Dudley Pike).

I-275 Interchange

Option 1 would reconfigure the interchange into a Diverging Diamond Interchange (DDI), similar to the new Graves Road Interchange, now open in Boone County. This design would use clearly-defined curbs, signs, pavement markings and signals to move drivers briefly over to the left (or opposite) side of the bridge above I-275, travel for a short distance, then back to the traditional (right) side of the road when continuing through the interchange. This travel pattern eliminates the left turn lane and reduces wait times at the intersection. The exit ramp from I-275 east would include dual rights to southbound Turkeyfoot.

Option 2 would focus on minor improvements to the existing interchange. This option would include adjusting the existing lane configurations to widen the exit ramp from I-275 eastbound to three lanes, one of which would be a dedicated left, and the others would be dedicated right turns to southbound Turkeyfoot. Moving north on Turkeyfoot, there would be a dedicated right to I-275 eastbound, plus a second shared through/right turn lane.

Next Steps

The purpose of the meeting tonight is to present proposed improvement options to the public and collect public comments on the alternatives.

After tonight's meeting, the following steps are planned:

1. Public comments will be collected until November 16, 2021.
2. The project development team will meet to discuss comments received and review the project information. After review and discussion, the team will make a recommendation for the preferred alternative.
3. Environmental studies will be completed on the preferred alternative.
4. Upon review and approval of the design report and environmental documentation, final roadway design will begin.
5. With the completion of final roadway plans, right of way acquisition and utility relocation can begin.
6. Once Step 5 is complete, improvements will be constructed.

Thank you for your attendance.

Please provide comments using the form provided at the meeting. **A comment form is also available online at [ImprovingTurkeyfootRoad.org/PublicInput](https://improvingturkeyfootroad.org/PublicInput).**

Comments can also be submitted by sending an email to mike.bezold@ky.gov.

Contact Person

Mr. Mike Bezold, TEBM Project Development
Kentucky Department of Highways, District 6
421 Buttermilk Pike
Covington, KY 41017
mike.bezold@ky.gov
859.341.2700



KY 1303 (Turkeyfoot Road)

Item 6-450



 **Gresham
Smith**



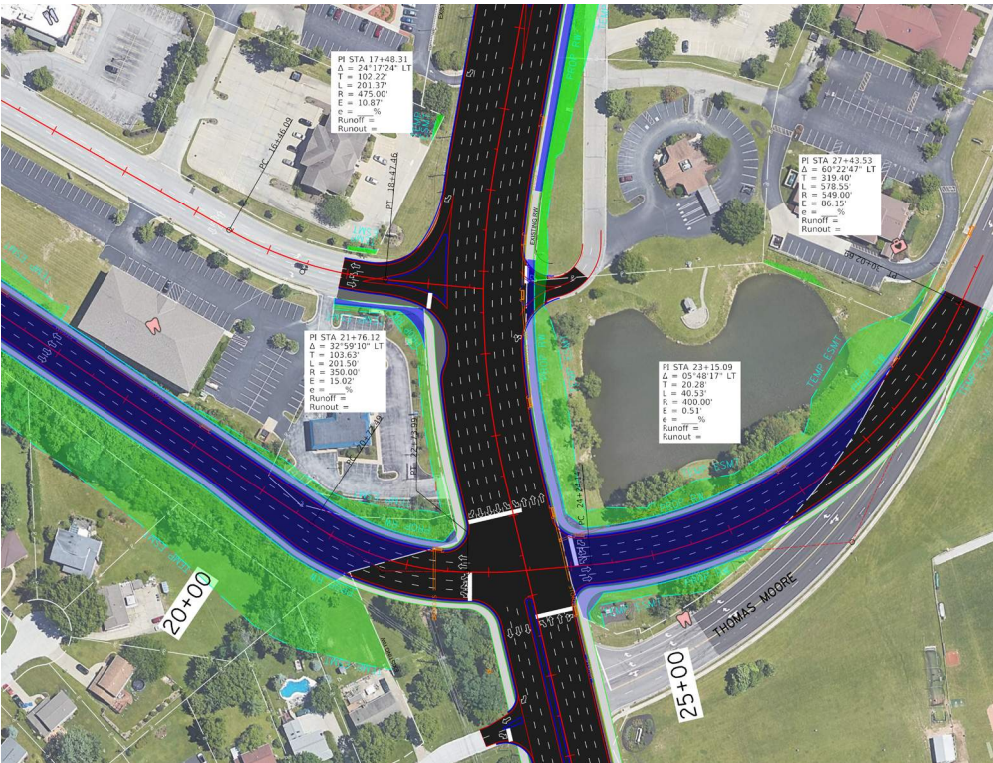
Turkeyfoot Road at Thomas More Parkway

To reduce congestion and improve traffic flow, the intersection of Thomas More Parkway and Towne Center Boulevard will be reconstructed. After much study, two options remain under consideration.

Option 1 would have combined (or shared) lanes at the intersection and has the smallest footprint. Traffic signals would direct vehicles moving in opposite directions to take turns when advancing/turning. While improving operations compared to existing conditions, this option is not as efficient as **option 2**.

Option 2 Each turning movement would have its own lane, which would decrease the length of time waiting at the light. This option will require removal of Central Bank and the pond on the Thomas More campus.

Under both options, access at Fraternity Court and Villa Madonna Drive would be changed to right in, right out only. Anyone wanting to turn left from Villa Madonna would instead go to Thomas More Parkway and turn left onto Turkeyfoot. The Turkeyfoot/College Park intersection would remain as is, without a signal.



Option 1



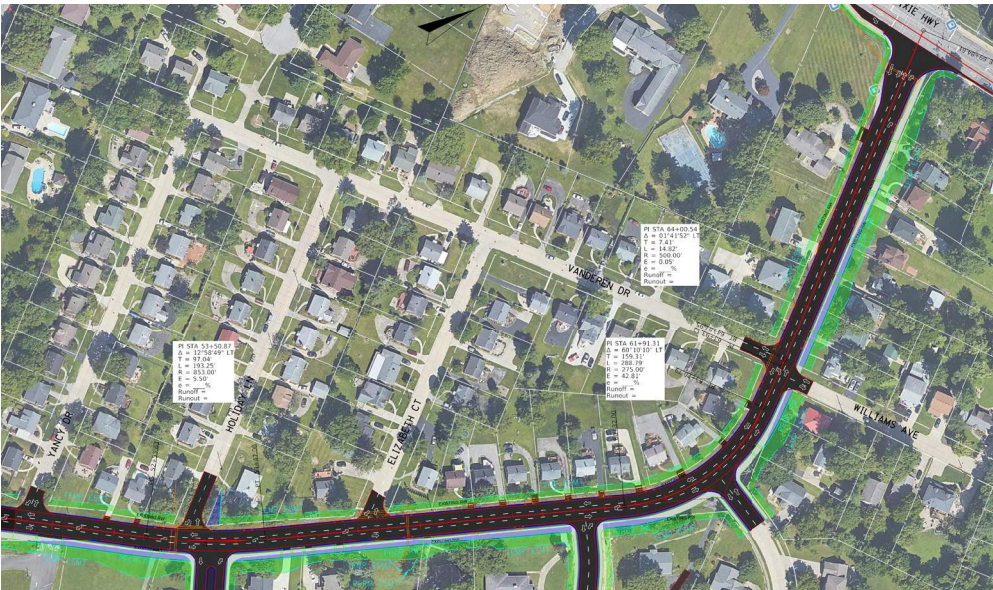
Option 2

North Turkeyfoot Road Options

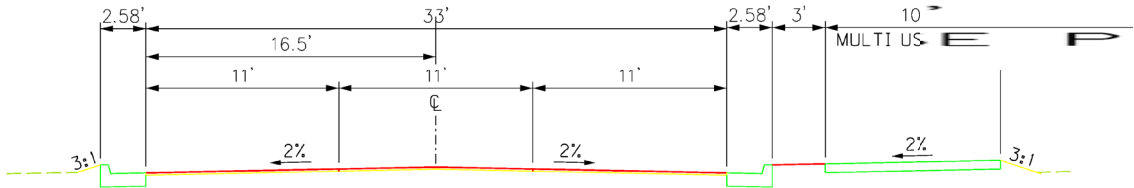
From I-275 to Dixie Hwy

Option 1 would widen the road to three lanes, similar to Buttermilk Pike, with a 10’ multi use path added on one side.

Option 2 would maintain a two-lane configuration between Dixie Highway and I-275, similar to most of the city streets in the vicinity. Each lane would be 10’ wide and sidewalks would be on both sides of the road. As this configuration is atypical for state routes, the responsibility for on-going maintenance of this north segment would be transferred from KYTC to the City of Lakeside Park upon completion of the project.



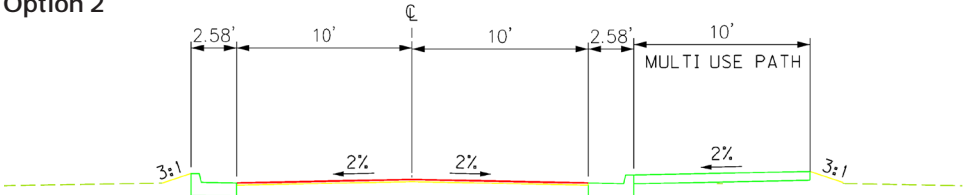
Option 1



3 LANES, 10 FT PATH RIGHT SIDE



Option 2



2 LANES, 10 FT PATH RIGHT SIDE